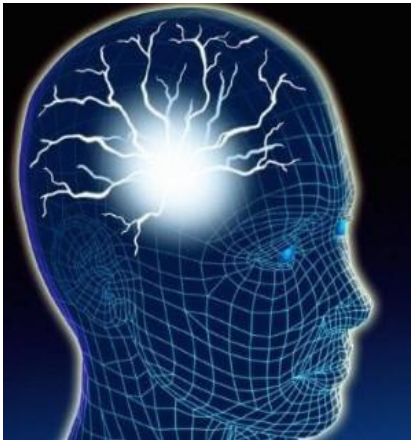




TEXAS TECH UNIVERSITY  
HEALTH SCIENCES CENTER™  
EL PASO

# Epilepsy Program

*Programa de Epilepsia en Texas Tech*



**Epilepsy services provide comprehensive outpatient care to eligible persons who have epilepsy and/or seizure-like symptoms.**

*Servicios Comperensivos de epilepsia a personas eligible que tienen epilepsia/ or sintomas parecidos.*

**If you are uninsured and have epilepsy/seizures you may qualify for our program and be covered for office visits with your physician. Social Services are also available.**

*Si usted no tiene seguro medico y tiene Epilepsia, ataques/convulsions podria calificar para nuestro programa que cubre visitas con el medico. Servicios Sociales tambien estan disponibles.*

Please contact/*Personas de contacto:*

**Lourdes Martinez, LBSW**  
**Neurology Department**  
**Social Worker**

Departamento de Neurologia  
Phone: (915) 215-5921  
Fax: (915) 545-6705

**Pat Miranda, CMA, CMAA, NA**  
**Neurology Department**  
**Patient Service Specialist**

Departamento de Neurologia  
Phone: (915) 215-4917  
Fax: (915) 545-6705

*Partially funded by*  
*Cubrimiento parcial por*

